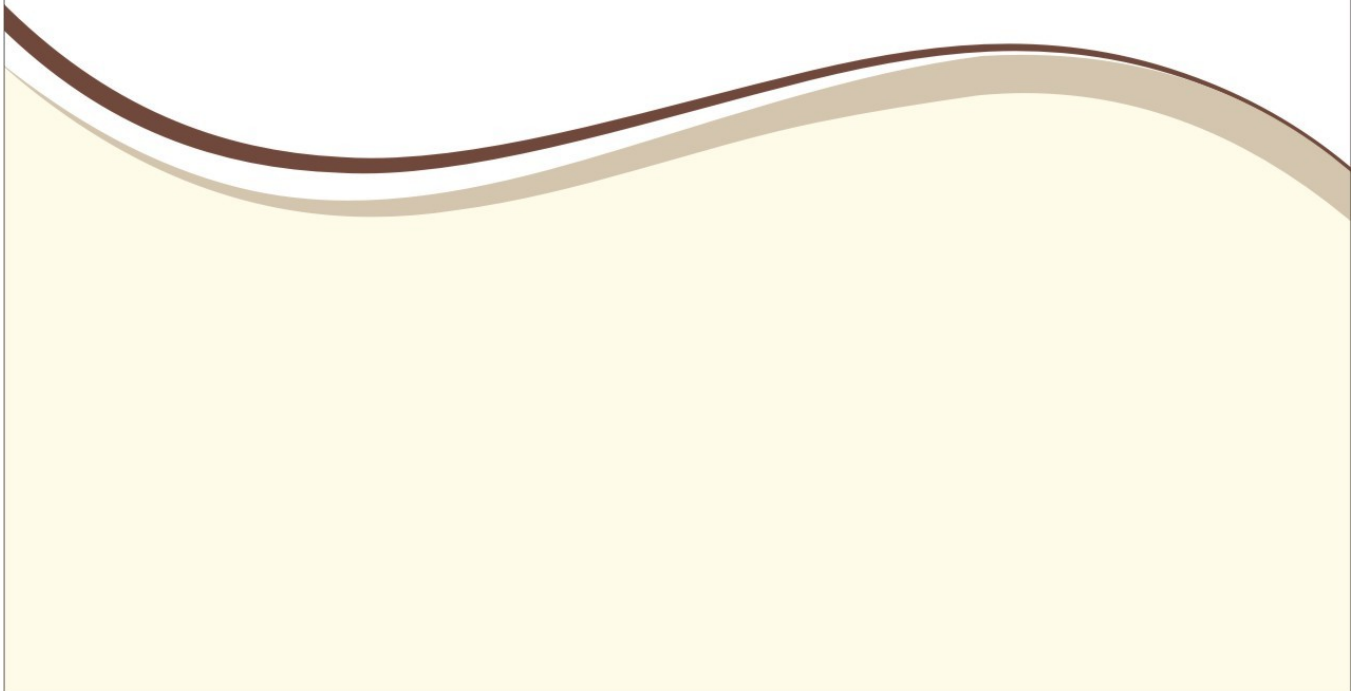




MAHENDRA AMPLE
Park



Invaluable - independent & apartment living



Welcome to great living

We Mahendra Builders & Developers and Ample Coloniser feel privileged & proud to present one of the best & innovative project of current time in the city of Bhopal by the name, Mahendra Ample Park

Opulence has found new address





“Mahendra Ample Park”, Truly a gem in modern living

Mahendra Ample Developers presents Mahendra Ample Park, a culmination of valuable homes in Bhopal. Cherish living in the midst of lush greens over here. It will be a great experience for the first home buyers, with all the benefits of an urban township. It provides you with every amenity that you desire. Sprawling clubhouse, 24 X 7 security, a peaceful life amidst a green premise and much more is on offer.

Add more value to your living

We are offering you elegantly designed Ultra luxurious 3 / 4 BHK Duplex residences along with spacious 2 / 3 BHK Flats in multi storey apartments. It is strategically located, offering you excellent connectivity to all the important places in the city.



Your dream desire @ Mahendra Ample Park

The best way to reside peacefully is to make nature a part of your life. We Mahendra Ample Developers truly bring this sentiment to our prestigious endeavor Mahendra Ample Park, where you live amidst nature and enjoy a great lifestyle.

Mahendra Ample Park, promises to offer pollution-free environs to one and all, as a perfect place to beat ones stressful lifestyle. The township has been aesthetically designed and planned to offer a judicious amalgamation of ideal city life amidst nature's goodness.

With beautifully landscaped gardens we bring you closer to nature. A well-equipped club, state of the art Swimming Pool, Shopping centre and all the requisites of a modern life in close vicinity we assure you a prosperous living and a world-class lifestyle for years to come.





About the company



We are a professionally managed ISO 9001 : 2008 certified group in the real estate business, a combination of vision, strength, resource management as well as extreme quality consciousness. We have already earned a name for understanding and fulfilling the needs and desires of esteemed customers through years of experience of developing our various projects. For years we have excelled in the field of Building Construction and developed a strong goodwill in the field of Real Estate in terms of "High Quality Construction" and "Elegant Architecture".

Mahendra Township Ph-1	Mahendra City	Mahendra Greenwoods
Mahendra Township Ph-2	Mahendra Plaza	Ample Height

On the other hand we are associated in other ventures like **Mahendra fuel point** (Petrol filling station), **Hostel Mahendra Inn.** (E-8 Extn. Bawadia Kalan, Bhopal), **Ware houses** (Near Mandideep) and upcoming venture like **Hotel Mahendra** at Hoshangabad Road, Bhopal.

Layout Plan



Index of Plots

- 24' x 48' Orchid
- 20' x 50' Tulip
- 20' x 45' Aster
- 25' x 62' Daffodil
- 3 BHK Flats } Pine
- 2 BHK Flats }
- Club House

MAHENDRA AMPLE *Park*

Practicality at its best

In Mahendra Ample Park, every aspect of the layout is defined by the needs of the people and hence creates a blend of urban habitat that is sustainable, integrated, promising and safe. We assure you ultimate satisfaction of owning your asset in terms of spacious and airy residences with best use of space on offer.

Serene environs to savor

The spacious duplex residences is immaculately planned to offer the best of natural beauty and architectural finesse. The presence of tree lined streets, beautifully designed landscapes, environment friendly planning with green areas and organized connectivity makes it a picture perfect of harmony.



Site Address : **SALAIYA**, Ahead of E-8 Extn. Bhopal (at main 80' Road)

Best
life style

Best
project

How will you feel
if you reside in a place
where every day
will be replenished
in natural environs...
Think about it





Leisure and lifestyle @ Mahendra Ample Park

Located in the midst of serene greens where peace and tranquility prevails, every moment over here will complement cherished living. Best in class facilities give 'recreation' a new dimension. Besides, you can also engage yourself in a refreshing morning jog or make your evenings delightful at the Club house. Along with other modern amenities, this place is a perfect retreat to calm down and flow with life.



Clubbing like never before @ Mahendra Ample Park

Exclusively designed state of the art club house, will offer you and your family a great place to re-energize & refresh. The club will offer a new world of recreational activities. Whenever you want to take time out from your routine life and schedules, you'll end up feeling relaxed and rejuvenated at the club.





Amazing ambiance..... Best in class



Luxury like never before



Best in Class Amenities

- Pollution free atmosphere
- Beautifully landscaped gardens with kids play area
- Club house with A.C. gym
- Swimming pool
- Safe & secured campus
- Centralized camera for security
- Shopping center
- Ample car parking
- Attractive lobby in apartments
- Jogging track
- Rain water harvesting
- Adequate water supply through sump well
- Under ground cable network
- Power back up for lift and common areas
- Intercom system connected to security guard room from each apartment and duplex
- Situated at 80ft. and 150ft wide master plan road
- Schools, Colleges, Hospitals, Restaurants Shopping complex and Mall in close vicinity





Ample happiness great lifestyle



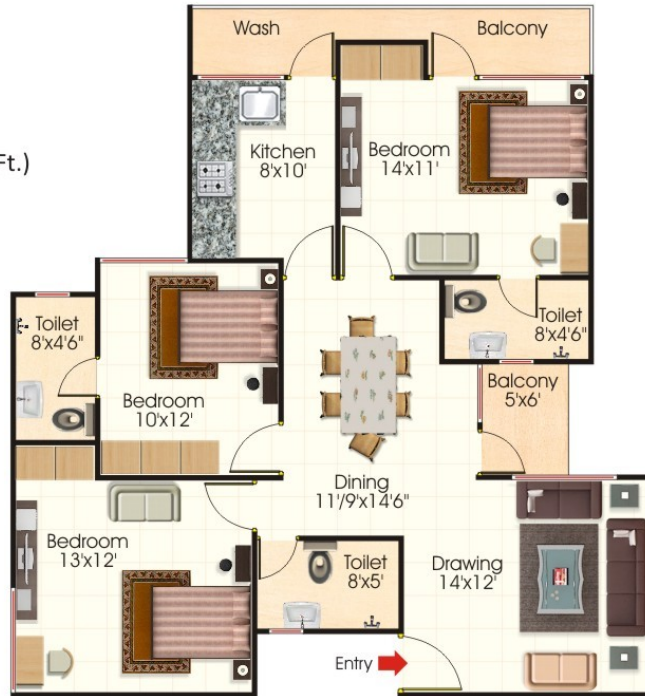
Pine



3 BHK with 3 Toilets

Built up area :

106.52 Sq.M. (1146 Sq.Ft.)



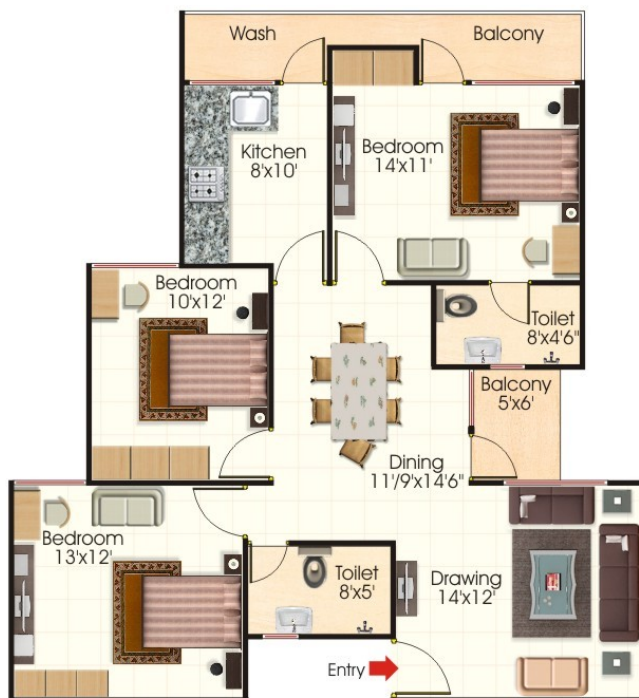
Pine



3 BHK with 2 Toilets

Built up area :

101.95 Sq.M. (1097 Sq.Ft.)



Pine



2 BHK with 2 Toilets

Built up area :

71.91 Sq.M. (766 Sq.Ft.)





Orchid

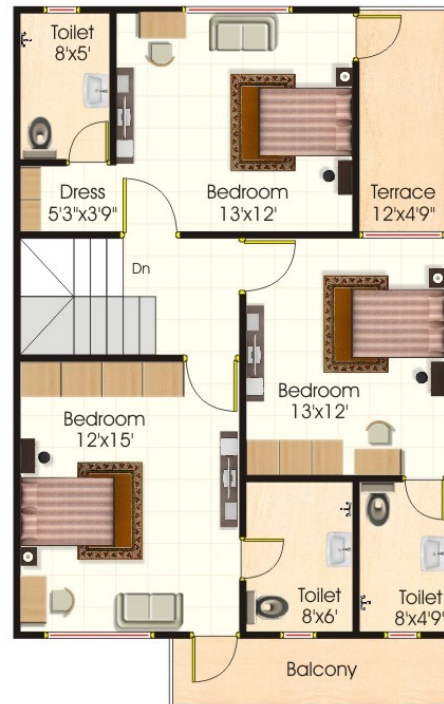


Plot Size - 24'x48' 7.3x14.6m (1152 Sq. Ft.)

Built up area - 1818 Sq. Ft. (169.03 Sq.m.)



Ground Floor Plan



First Floor Plan

Tulip



Plot Size - 20'x50' 6.1x15.25m (1000 Sq. Ft.)

Built up area - 1595 Sq. Ft. (148.31 Sq.m.)



Ground Floor Plan



First Floor Plan

Aster



Plot Size - 20'x45' 6.1x13.75m (900 Sq. Ft.)

Built up area - 1437 Sq. Ft. (133.62 Sq.m.)



Ground Floor Plan



First Floor Plan

Specifications on Offer

Structure

Seismic Zone resistant
RCC Framed Structure

Brick Work

'A' Class Brick Masonry

Flooring

Vitrified tiles 2'x2' in drawing,
dinning & all bedrooms
except toilets & balconies.
Stairs with granite steps and
heavy duty tiles in parking

Kitchen

Granite stone platform with
steel sink, glazed tiles dado
upto 2' height

Toilets

Anti-skid tiles on floor, premium
designer tiles upto 7' height on walls,
sanitary ware of standard make,
chromium plated bathroom
fittings of standard make

Door

Wooden Frames, Laminated shutter
for main door, good quality
flush door with 'A' class fittings

Windows

Powder coated aluminium
3 track windows with
mesh and MS Grills

POP Work

Elegant Plaster of Paris cornice in
drawing/dinning and all bedrooms

Electrical

Fire resistant electrical wires with ISI
mark branded modular electrical
switches and circuit security through
miniature circuit breakers



Best lifestyle for entire family



Water supply

Concealed PPR / CPVC pipes lines with individual 750 litre water tank for 2BHK apartments, 1000 litre for 3BHK apartments & duplex and 1250 litre for 4BHK duplex.
Supply through common sump well

Painting

Oil Bound Distemper of pleasing shades on internal walls and exterior weather proof paint, oil paint on steel fabricated members and flush door

Water proofing

Water proofing in all toilets and terrace area to prevent seepage

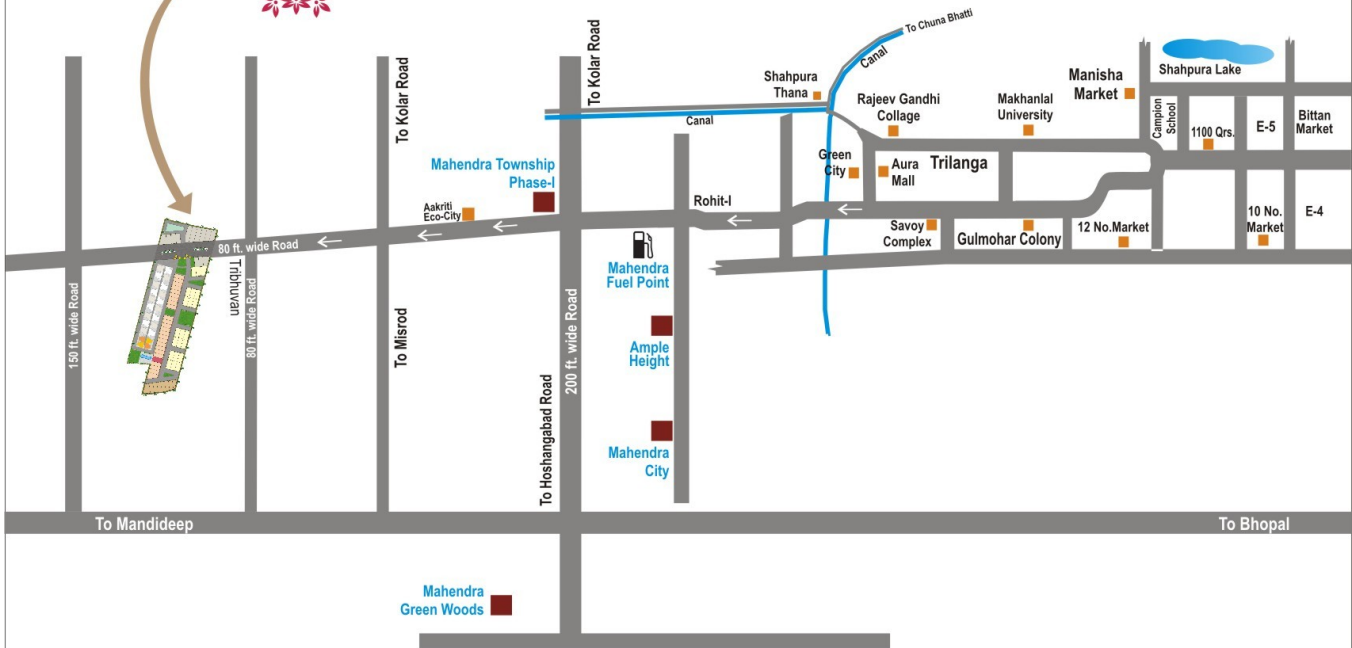
Utility points

Provision for A.C. & TV points in all bedrooms, Telephone point in living room.
Power point & water point for aqua guard / RO.
Power point for refrigerator, microwave electrical mixer and washing machine. Invertor wiring



MAHENDRA AMPLE Park

Location Map



Site Address : **SALAIYA**, Ahead of E-8 Extn. Bhopal. Tel.: 96850 66688



Project By:



MAHENDRA AMPLE DEVELOPERS

154, Mahendra Complex, Zone- I, M.P.Nagar, Bhopal-11

Cell.: **94250 05969**, Tel.: **0755-2551172, 3013668**

E-mail: mahendrabuilders@rediffmail.com • mahendraample@yahoo.in • www.mahendrabuilders.in

[f](#) /mahendrabuilders [t](#) /Mbdindia

Co-Promoter: SAVITRI DWELLING Pvt. Ltd.
Cell.: 9589143421, 9713016121



Architect:
Manoj Misra & Associates
Bhopal

This brochure is purely conceptual & not a legal offering. All visual photographs used in this brochure are artists impressions. All specifications, sizes & layout etc. are tentative & subject to such variations, additions, modifications as decided by the Architects or by the Promoters.